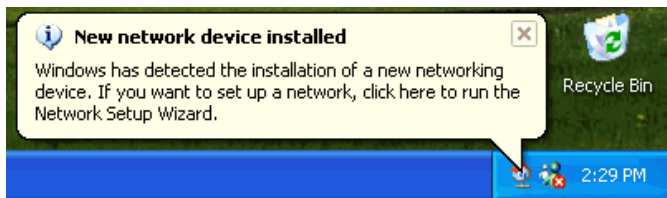


## Configuring Network Settings for Windows XP

Windows XP provides several methods for configuring the network setup. The guide will cover using the [Network Setup Wizard](#) (best suited for the novice user) and also the traditional [Network Configuration - Advanced Setup](#).

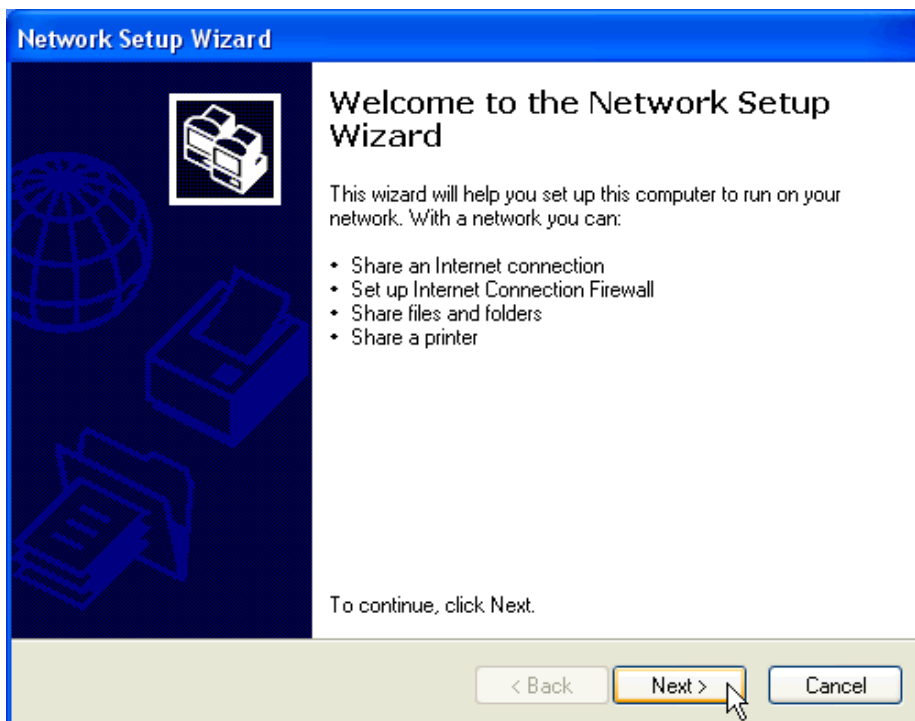
### Network Setup Wizard

1. If this is the first time the computer has been powered on since the network card was installed, then Windows XP will detect the new network card and allow you to start the **Network Setup Wizard** by clicking on the text.

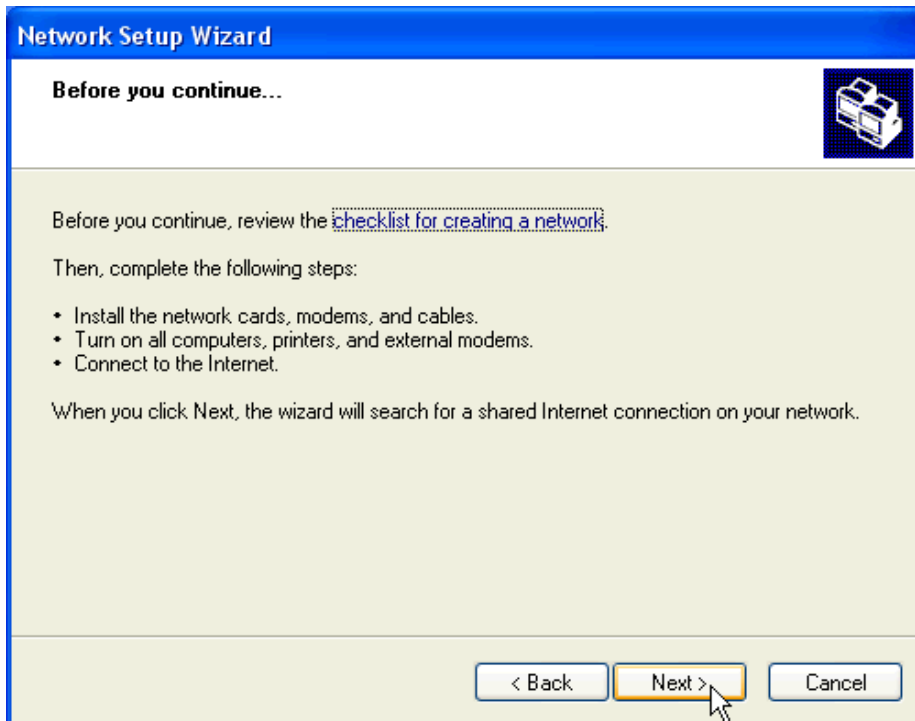


- **Otherwise** -

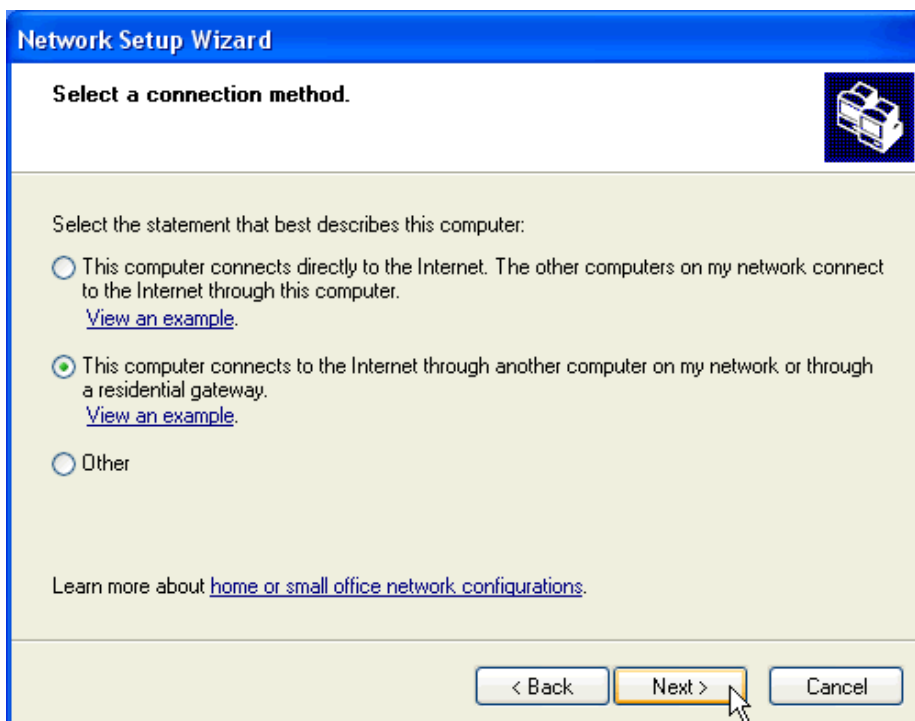
Click on **Start, All Programs, Accessories, Communications**, and then **Network Setup Wizard** to configure network settings with the wizard.



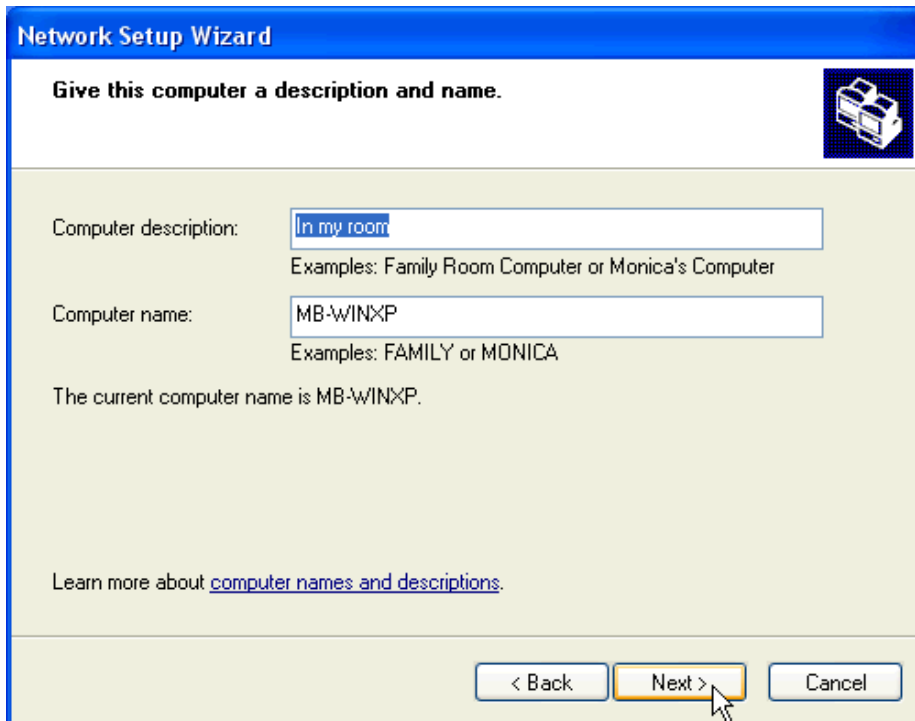
2. Click on **Next** button.



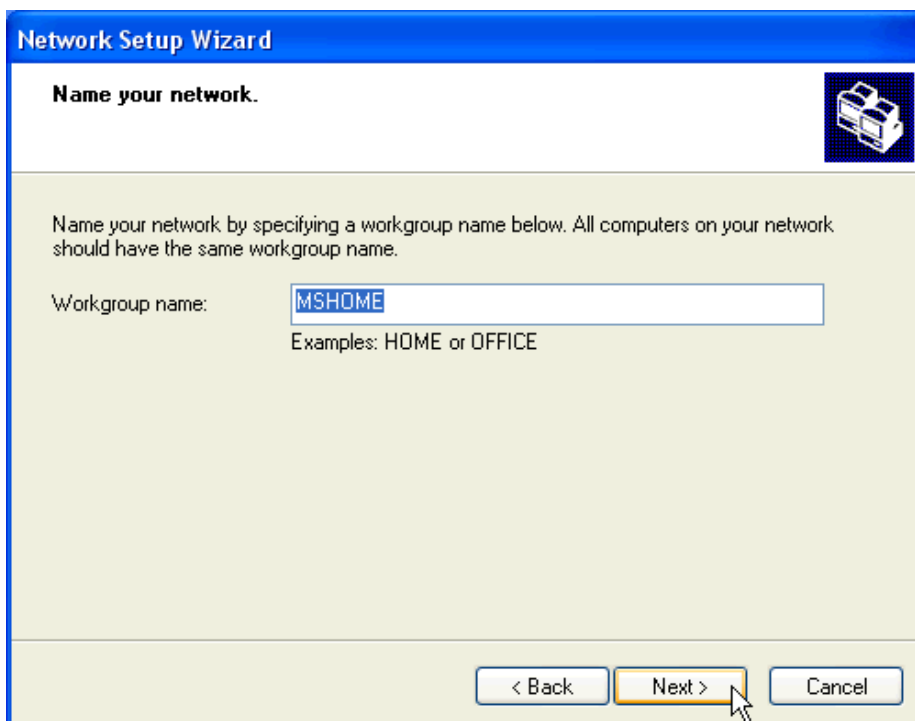
3. Click on the **Next** button.



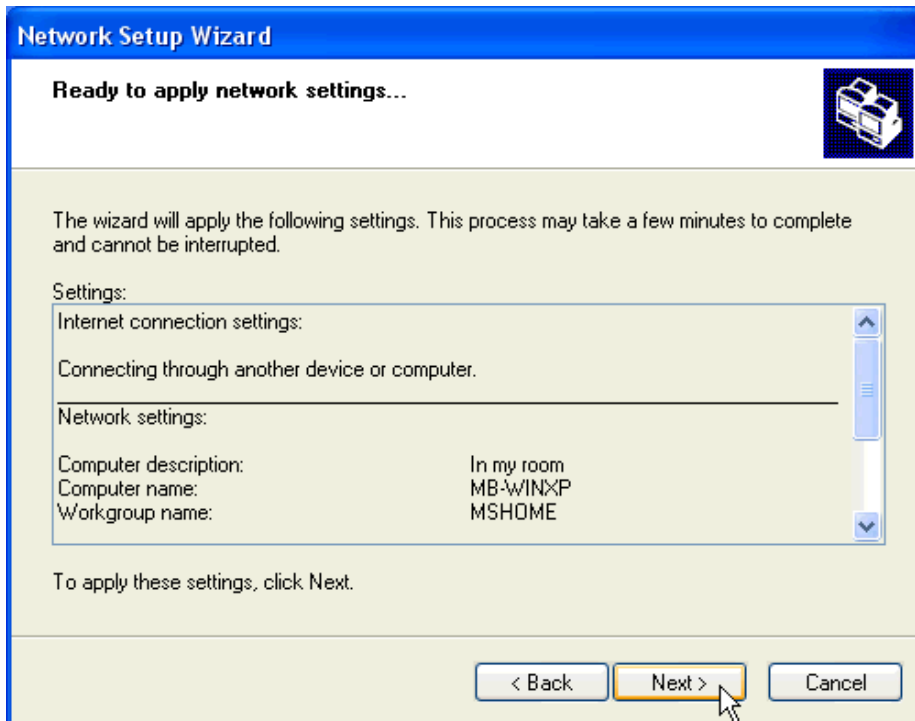
4. Ensure that **This computer connects to the Internet through another computer...** is selected and then click on **Next** button.



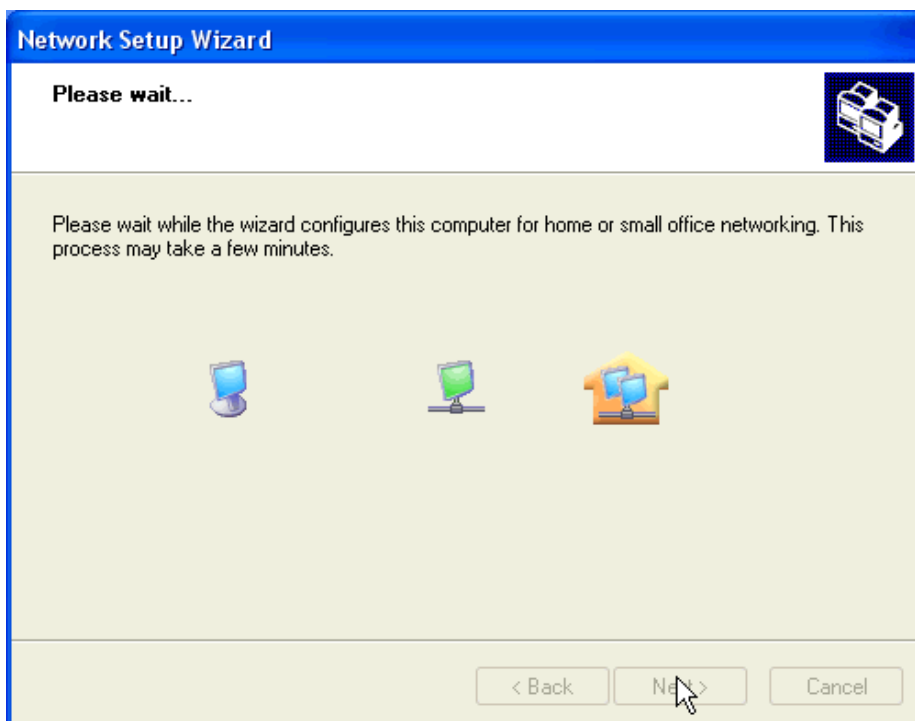
5. Enter Computer description/name: e.g. MY COMPUTER. Click on **Next** button.



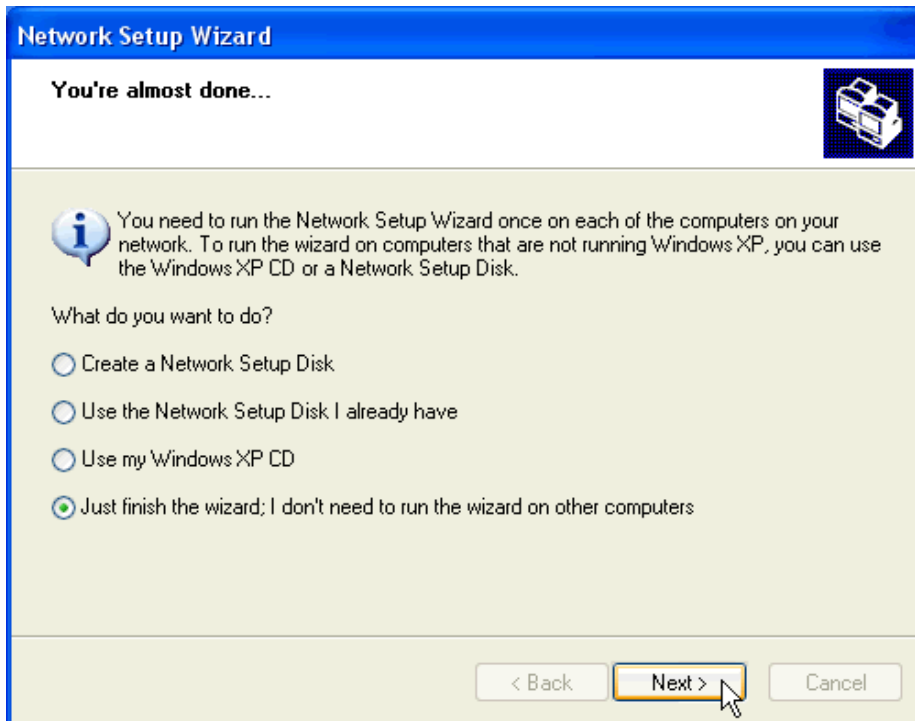
6. Enter Workgroup name: e.g. MSHOME. Click on **Next** button.



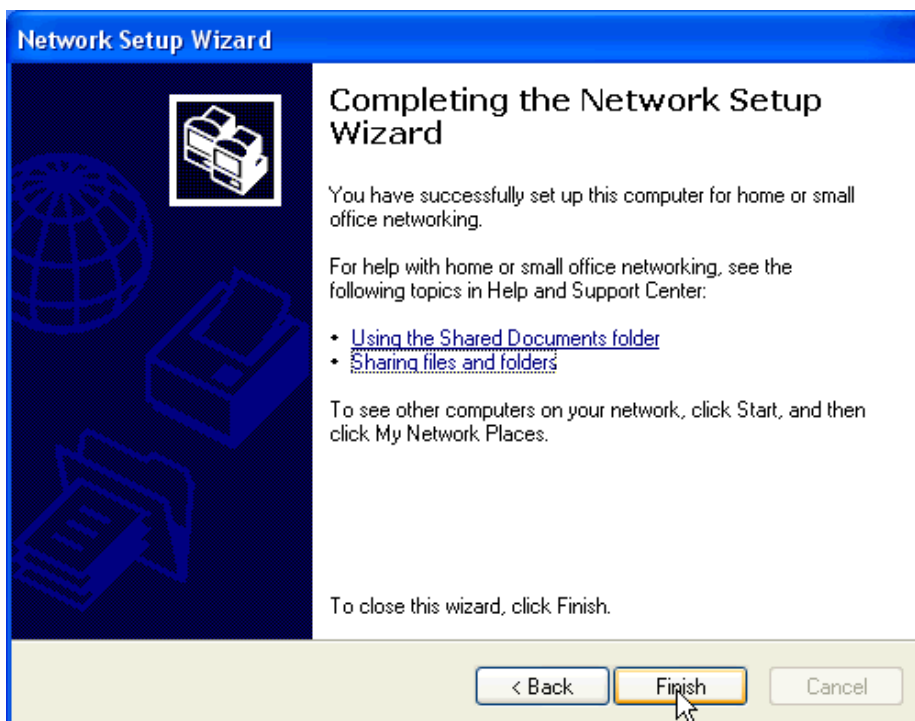
7. Click on **Next** button if you are satisfied with the settings.



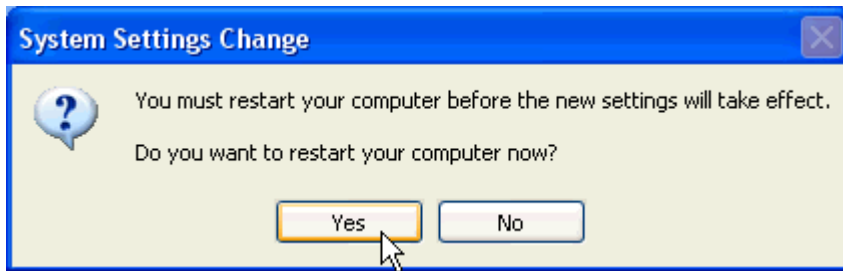
8. Please wait while the wizard configures this computer.



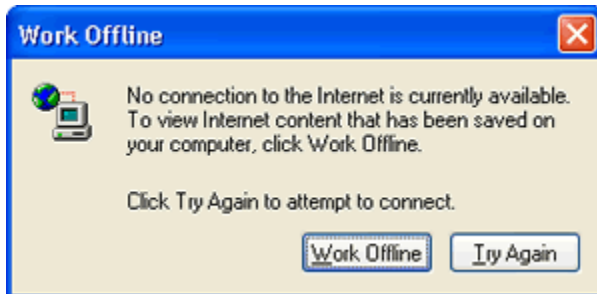
9. Select **Just finish the wizard...** and click on **Next** button.



10. Click on **Finish** button to complete the Network Setup Wizard.



11. If asked to restart your computer. Click on **Yes** button.



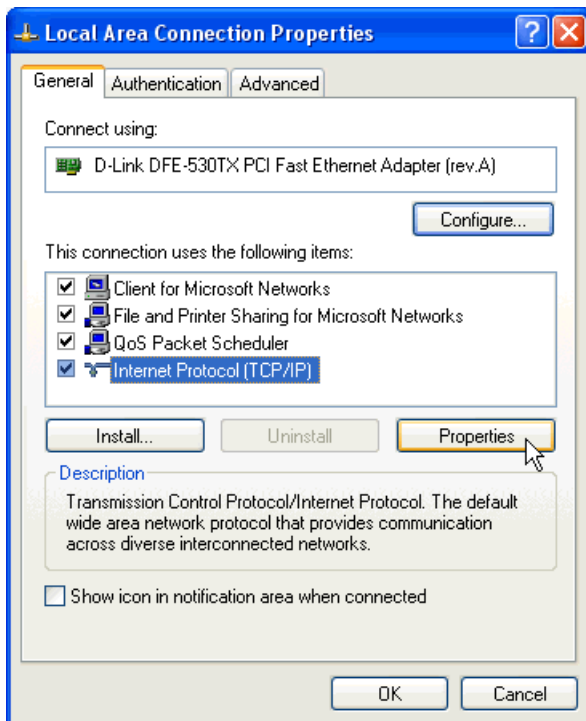
12. After you restart your computer, click on the start menu and then open Internet Explorer. If you see the **Work Offline** window click on **Try Again** button and Internet Explorer should start and you are now connected to ResNet.

If you have problems with the connection, please refer to the following guide: [Configure the Internet Explorer browser](#).

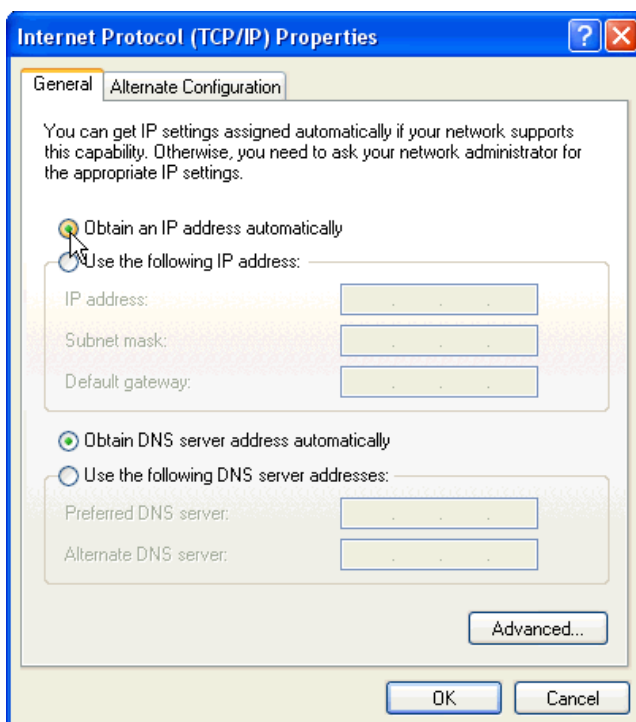
If you're still having trouble consult the [Troubleshooting](#) guide.

## Network Configuration - Advanced Setup

1. Click the **Start** button and select the **Control Panel**. Click **Network and Internet Connections** and then locate and double-click **Network Connections** icon. Right-click on **Local Area Connection** and select **Properties**.

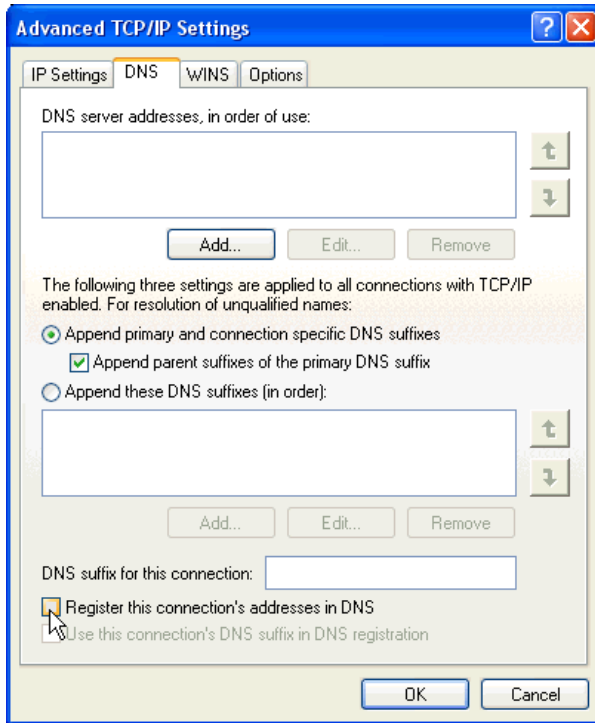


2. Highlight **Internet Protocol - TCP/IP** and then click the **Properties** button.

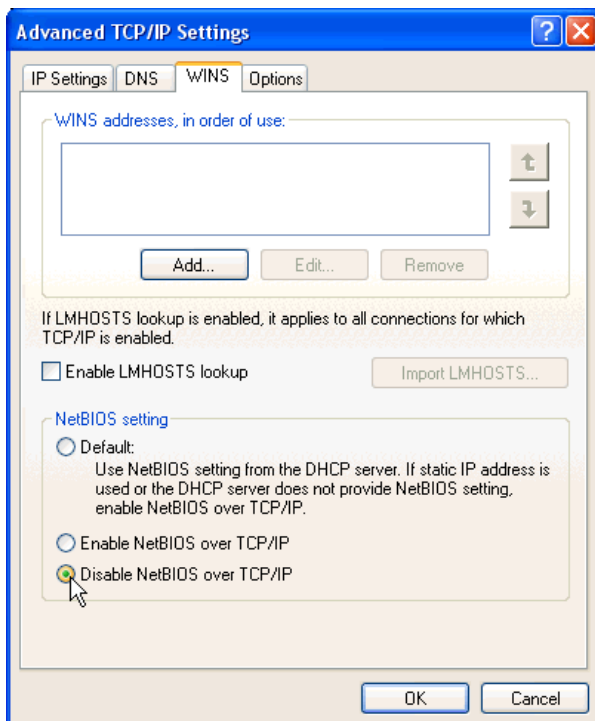


3. Ensure **Obtain an IP address automatically** and **Obtain DSN server address automatically** is selected.

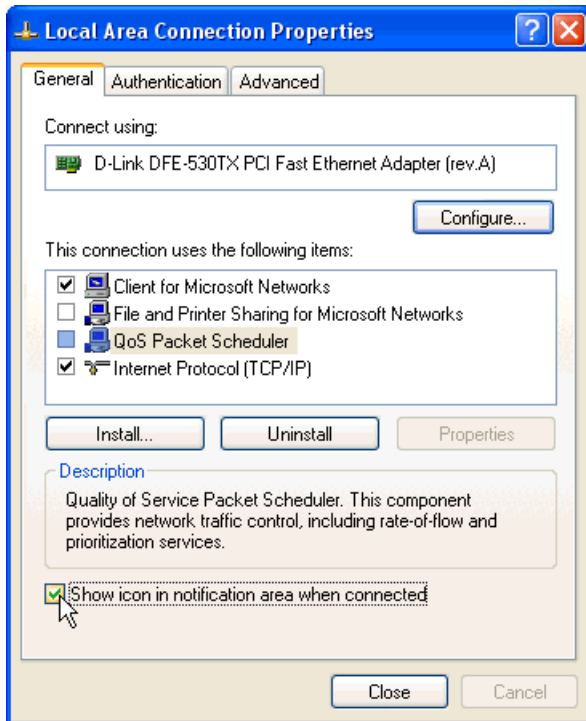
4. Next click the **Advanced** button and then the **DNS** tab.



5. Remove the CHECK next to **Register this connection's address in DNS**.

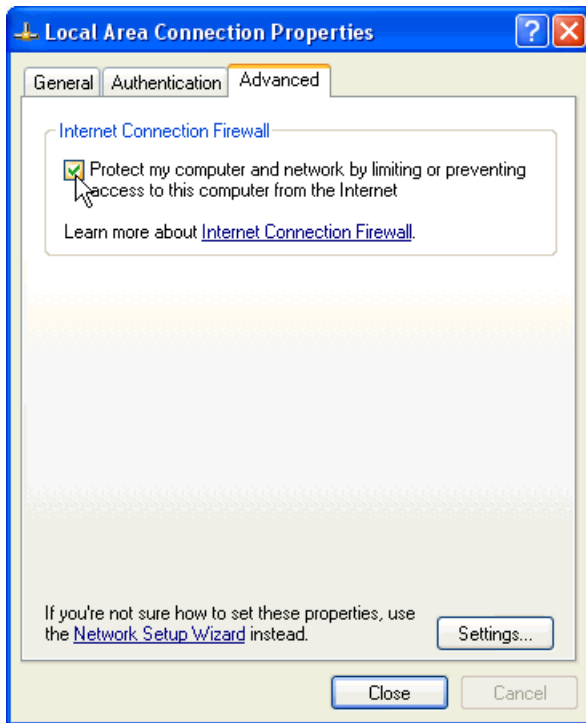


6. Click the **WINS** tab and ensure that **Disable NetBios over TCP/IP** is selected.
7. Click the **OK** button to complete advanced setup.
8. Click **OK** button to complete TCP/IP setup
9. For the added security of your computer and it's data, it is recommended than you disable **File and printer sharing for Microsoft Networks**. QOS Packet Scheduler is also not required. Remove CHECKS to disable them both.



10. If you would like the ability to see when you have a connection, put a check in the box next to **Show icon in taskbar when connected**.

11. Go to the **Advanced** tab and put a CHECK in the box to enable the **Internet Connection Firewall**. This is an added security feature in XP that helps protect your computer from unauthorized access from the Internet.



12. Click the **Close** button to complete the network setup.

You can now close any unwanted windows and proceed onto [Configure the Internet Explorer browser](#).